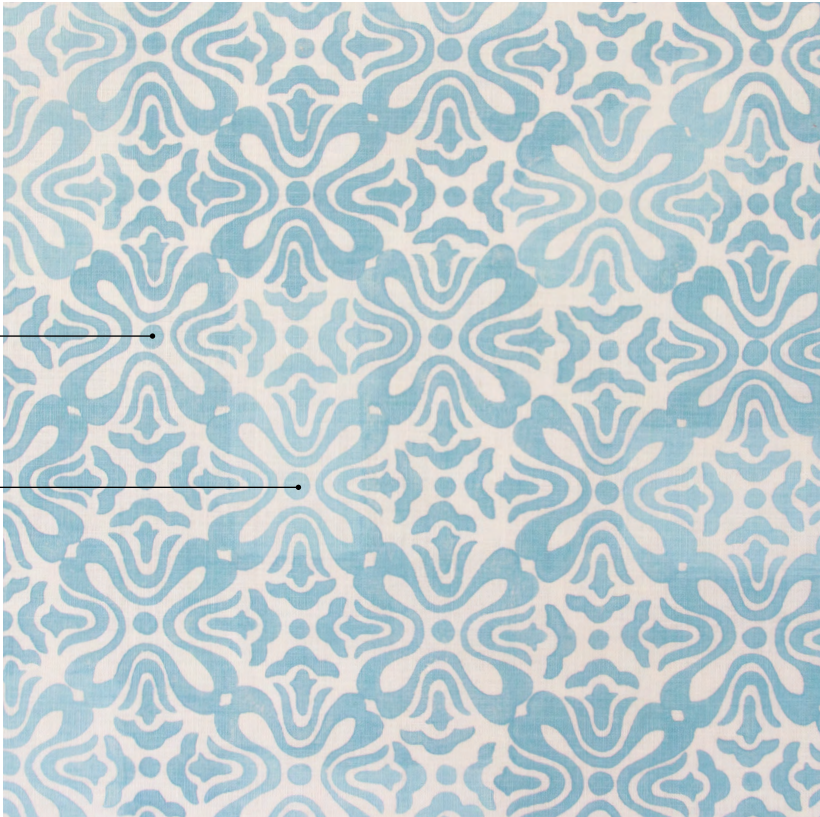


Standard Tulip Fabric Colorways



Pictured in Capri on Logan White Linen

Tulip

Width: 54"
Repeat: 18"v x 17 1/2"h

Grounds:

- Bartram Natural Linen (BNL)
- Bartram White Linen (BWL)
- Logan Cream Linen (LCL)
- Logan Natural Linen (LNL)
- Logan White Linen (LWL)

Capri (LWL)

- 1. Capri
- 2. Topaz

Caramel (LNL)

- 1. Caramel
- 2. Toffee

Chiffon (LWL)

- 1. Chiffon
- 2. Rosewater

Dark Wave (LNL)

- 1. Dark Wave
- 2. Bluestone

Denim (LWL)

- 1. Denim
- 2. Denim Roll-In for Tulip

Light Cadet (LWL)

- 1. Light Cadet
- 2. Light Stone

Light Vapor (LWL)

- 1. Light Vapor
- 2. Light Dusk

Mineral (LWL)

- 1. Mineral
- 2. Light Mineral

Pollen (LNL)

- 1. Pollen
- 2. Goldenrod

Terra Cotta (LNL)

- 1. Terra Cotta
- 2. Radish