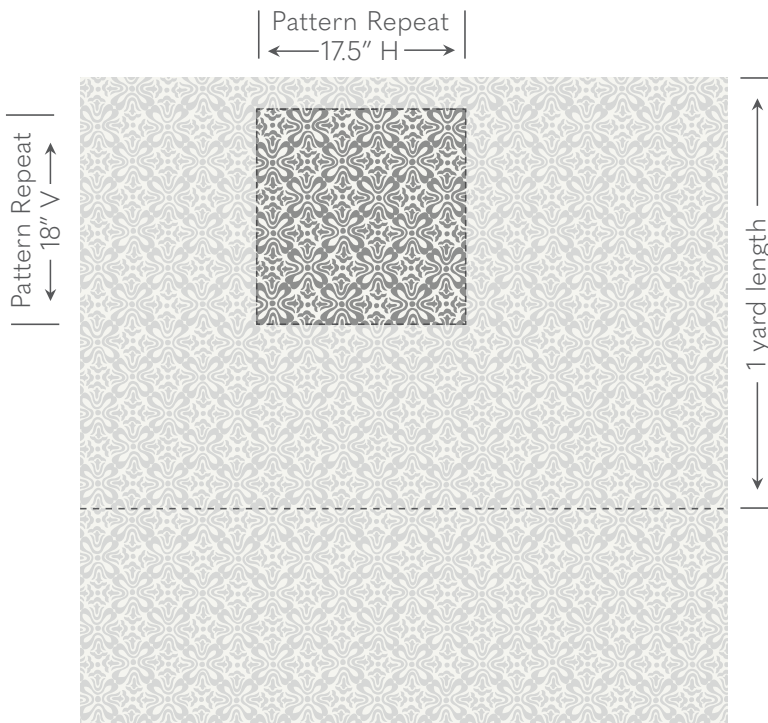


Galbraith & Paul

Specification Sheet

HANDBLOCK
Tulip



Shown above in Mineral on Logan White Room Design by Cathy Rhodes Interiors

Ground Cloth Logan Linen

Content 100% Linen

Printed Width 54"

Repeat 18"v x 17.5"h

Print Lengths Our tables are 8 yards long.
For orders over 8 yards, print lengths of 8 yards or less must be provided in yard or 1/2 yard increments.

Weight 6.8 oz / Yard²

Abrasion Wyzenbeek 21,000

Lightfastness AATCC 16 - Grade 5

Flame Resistance Not inherently FR; additional finish required.

Stain Finish Compatible with traditional spray finish only.

Cleaning Dry Clean Only. Use a trusted high-quality cleaner.

Applications Window treatments, upholstery, and bedding.

Backing Backing is recommended for heavy-use upholstery applications.
Requirements vary by upholsterer and end use.

Galbraith & Paul

Pattern Schematic

HANDBLOCK

Tulip



Shown above in Caramel on Logan Natural Linen

Printed Width: 54"

Repeat: 18"v x 17.5"h

GROUNDS:

- Bartram Natural Linen (BNL)
- Bartram White Linen (BWL)
- Logan Cream Linen (LCL)
- Logan Natural Linen (LNL)
- Logan White Linen (LWL)



Capri (LWL)

1. Capri
2. Topaz



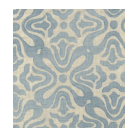
Caramel (LNL)

1. Caramel
2. Toffee



Chiffon (LWL)

1. Chiffon
2. Rosewater



Dark Wave (LNL)

1. Dark Wave
2. Bluestone



Denim (LWL)

1. Denim
2. Denim Roll-in for Tulip



Light Cadet (LWL)

1. Light Cadet
2. Light Stone



Light Vapor (LWL)

1. Light Vapor
2. Light Dusk



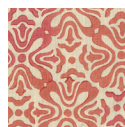
Mineral (LWL)

1. Mineral
2. Light Mineral



Pollen (LNL)

1. Pollen
2. Goldenrod



Terra Cotta (LNL)

1. Terra Cotta
2. Radish