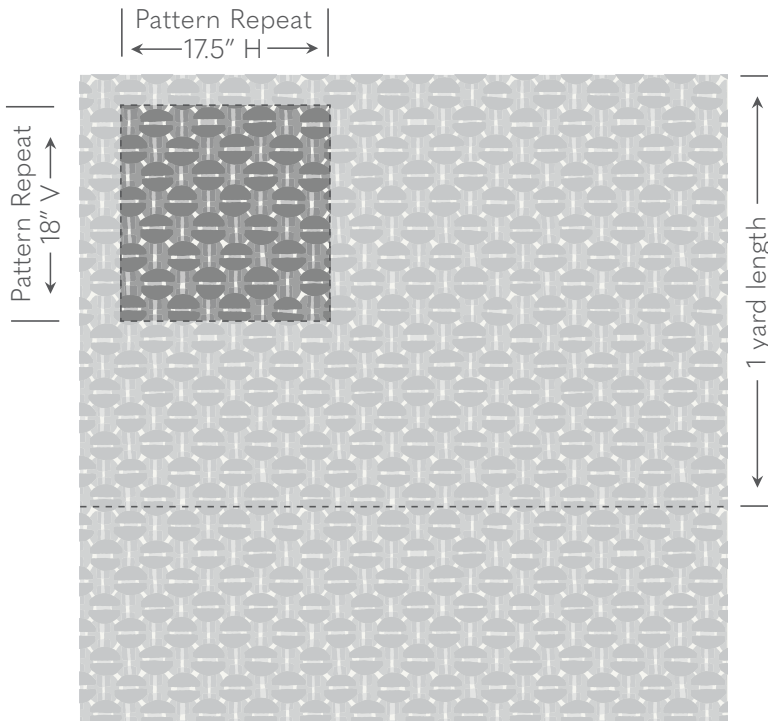


# Galbraith & Paul

## Specification Sheet

HANDBLOCK  
*Madras*



Shown above in Cadet on Bartram Natural Linen

**Ground Cloth** Bartram Linen

**Content** 100% Linen

**Printed Width** 54"

**Repeat** 18"v x 17.5"h

**Print Lengths** Our tables are 8 yards long.  
For orders over 8 yards, print lengths of 8 yards or less must be provided in yard or 1/2 yard increments.

**Weight** 14.5 oz / Yard<sup>2</sup>

**Abrasion** Wyzenbeek 15,000

**Lightfastness** AATCC 16 - Grade 5

**Flame Resistance** Not inherently FR; additional finish required.

**Stain Finish** Compatible with traditional spray finish only.

**Cleaning** Dry Clean Only. Use a trusted high-quality cleaner.

**Applications** Window treatments, upholstery, and bedding.

**Backing** Backing is recommended for heavy-use upholstery applications.  
Requirements vary by upholsterer and end use.

# Galbraith & Paul

## Pattern Schematic

# HANDBLOCK

## Madras

Printed Width: 54"

Repeat: 18"v x 17.5"h

### GROUNDS:

- Bartram Natural Linen (BNL)
- Bartram White Linen (BWL)
- Logan Cream Linen (LCL)
- Logan Natural Linen (LNL)
- Logan White Linen (LWL)



© Galbraith & Paul

Shown above in Shamrock on Bartram White Linen



### Blue Wash (BWL)

1. Wisp
2. Blue Wash
3. Alabaster



### Cadet (BNL)

1. Cadet
2. Light Indigo
3. Light Cadet



### Denim (BNL)

1. Denim
2. Light Indigo
3. Pool for Madras



### Shamrock (BWL)

1. Pool for Madras
2. Shamrock
3. Alabaster



### Sherbet (BNL)

1. Pink Wash for Madras
2. Sherbet
3. Pumice



### Willow (BWL)

1. Mineral
2. Willow for Madras
3. Alabaster