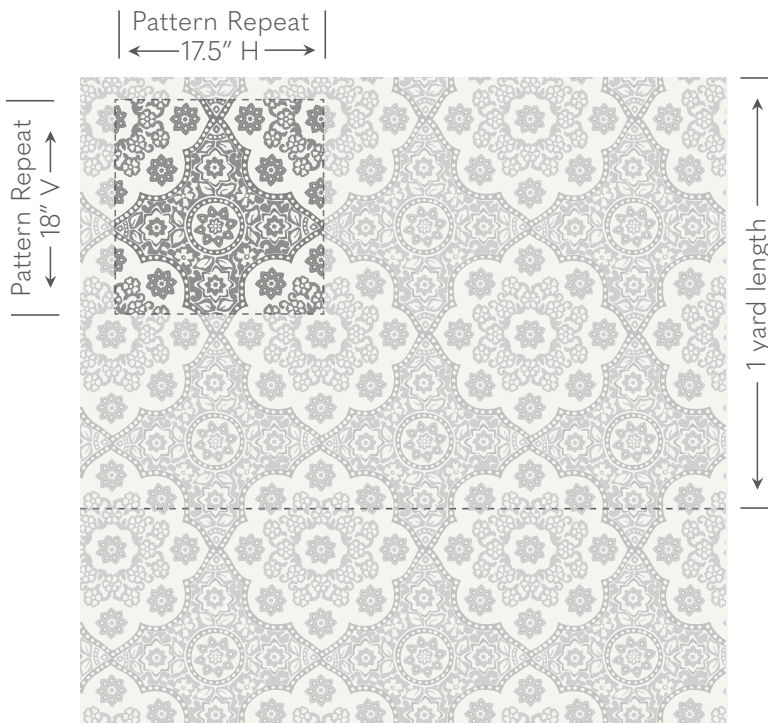


Galbraith & Paul

Specification Sheet

HANDBLOCK
Seville Medallion



Shown above in Custom Room Design by B. Brosnan Interiors

Ground Cloth Logan Linen

Content 100% Linen

Printed Width 54"

Repeat 18"v x 17.5"h

Print Lengths Our tables are 8 yards long.
For orders over 8 yards, print lengths of 8 yards or less must be provided in yard or 1/2 yard increments.

Weight 6.8 oz / Yard²

Abrasion Wyzenbeek 21,000

Lightfastness AATCC 16 - Grade 5

Flame Resistance Not inherently FR; additional finish required.

Stain Finish Compatible with traditional spray finish only.

Cleaning Dry Clean Only. Use a trusted high-quality cleaner.

Applications Window treatments, upholstery, and bedding.

Backing Backing is recommended for heavy-use upholstery applications.
Requirements vary by upholsterer and end use.

Galbraith & Paul

Pattern Schematic

HANDBLOCK

Seville Medallion

Printed Width: 54"

Repeat: 18"v x 17.5"h

GROUNDS:

- Bartram Natural Linen (BNL)
- Bartram White Linen (BWL)
- Logan Cream Linen (LCL)
- Logan Natural Linen (LNL)
- Logan White Linen (LWL)

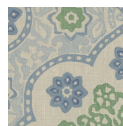


Shown above in Bluestone on Logan Natural Linen



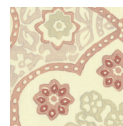
Ash (LNL)

1. Flint
2. Ash
3. Wheat
4. Millet



Bluestone (LNL)

1. Bluestone
2. Denim Wash
3. Leaf
4. Sapphire



Blush (LCL)

1. Blush
2. Pale Pink
3. Linen
4. Terra Cotta



Cadet (LNL)

1. Light Indigo
2. Cadet
3. Bluewash
4. Bluewash



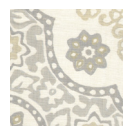
Goldenrod (LCL)

1. Goldenrod
2. Daffodil
3. Robin's Egg Wash
4. Light Mineral



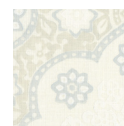
Harbor (LWL)

1. Bluebell
2. Harbor
3. Harbor
4. Sapphire



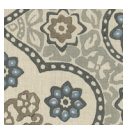
Light Stone (LWL)

1. Light Stone
2. Shadow
3. Light Stucco
4. Light Flax



Snow (LWL)

1. Heron
2. Alabaster
3. Snow
4. Snow



Walnut (LNL)

1. Indigo
2. Flint
3. Walnut
4. Bluestone