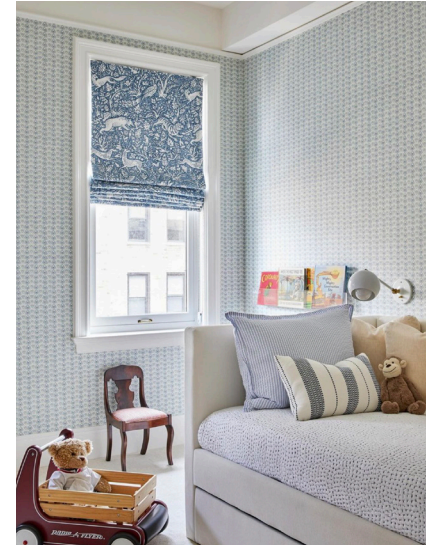
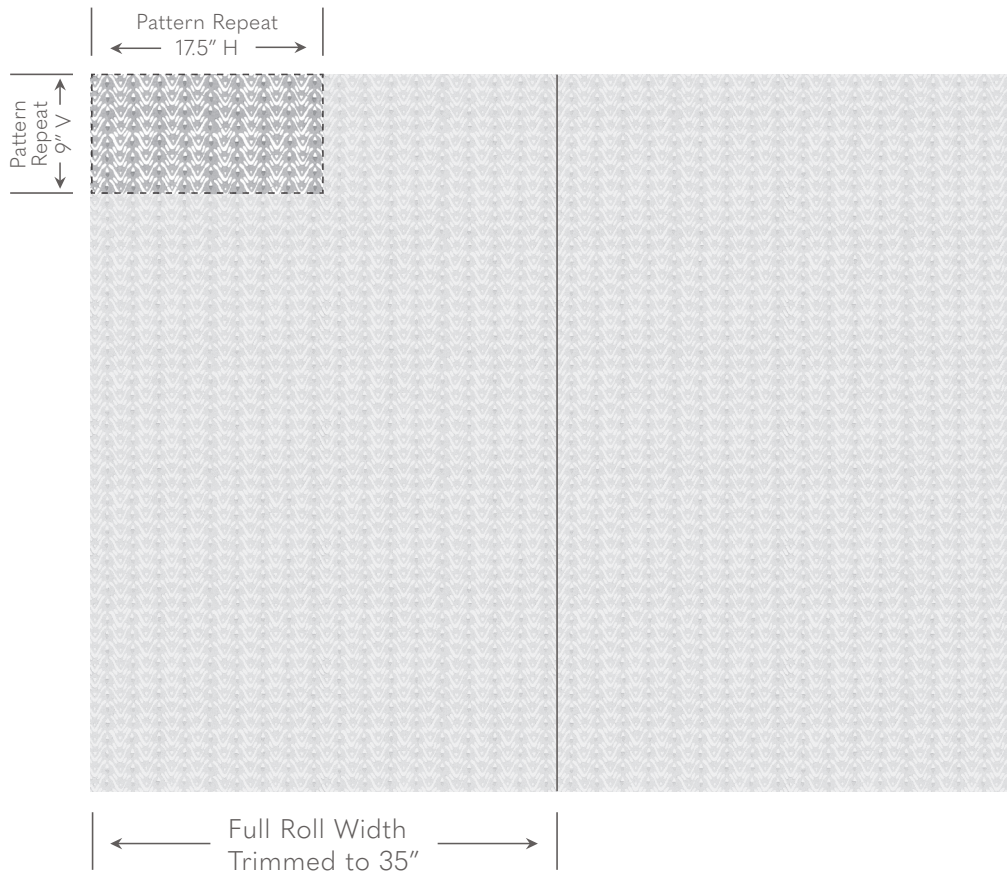


Galbraith & Paul

Specification Sheet

WALLPAPER
Bellflower



Shown above in Dolphin Room Design by Rebecca Frye Design

- Contents** Paper, Nylon-Reinforced
- Thickness** 11 mil
- Printed Width** 35" - Requires Trimming
- Repeat** 9"v x 17.5"h
- Roll Lengths** Standard Roll Size is 10 yards. Custom Yardage amounts and roll lengths can also be specified. Custom Yardage amounts must be submitted with their roll lengths in order to be processed and confirmed. *All rolls start at the same place in the repeat.*
- Trim Marks** Standard, but can be omitted on request.
- Fire-Rating** ASTM E84 - Class A
- Moisture Resistance** For use in bathrooms and kitchens, we recommend [Proseal Plus](#) prior to installation, or [Benwood Stays Clear](#) post-installation.
- Lightfastness** AATCC 16 - Grade 5
- Cleaning** Wipe Gently, No Abrasives.

Galbraith & Paul recommends using a guild-certified wallcovering installer. Installation Instructions can be found on our website and are included with every order.

Galbraith & Paul

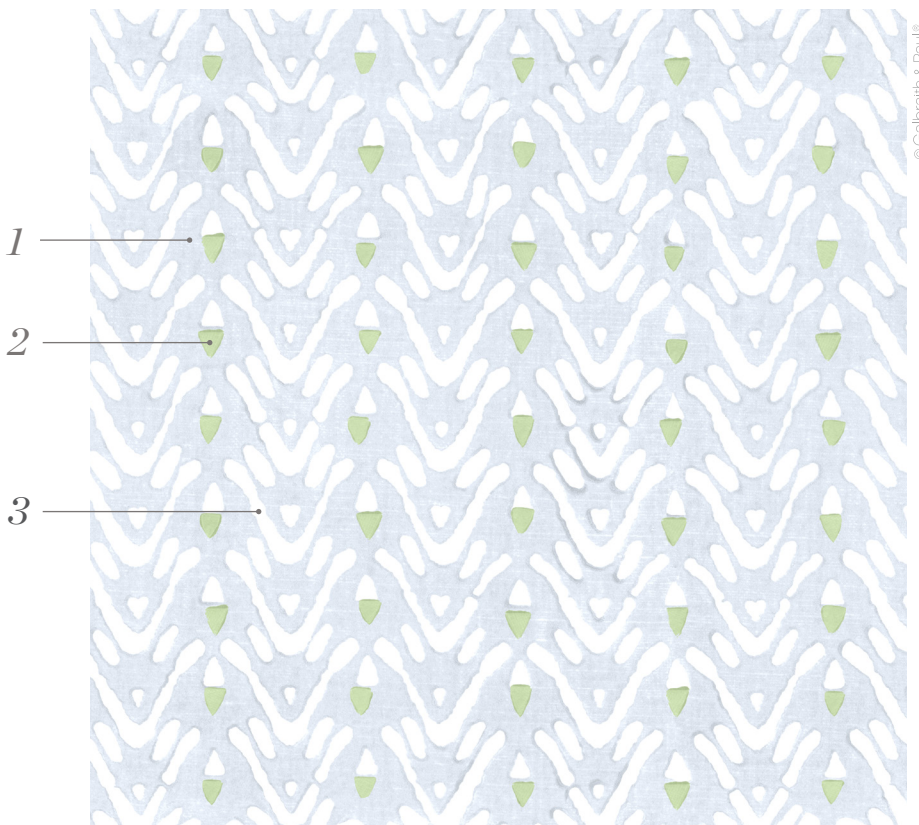
Pattern Schematic

WALLPAPER

Bellflower

Width: 36" (trims to 35")

Repeat: 9"v x 17.5"h



Shown above in Stratus



Birch

1. Chalk
2. Talc
3. Birch



Cameo

1. Cameo
2. Teaberry
3. Paper White



Carbon

1. Carbon
2. Peat
3. Flint



Cloud

1. Cloud
2. Stucco
3. Paper White



Cucumber

1. Dew
2. Light Baby Blue
3. Cucumber



Dolphin

1. Dolphin
2. Denim
3. Ivory



Harbor

1. Cloud
2. Bright White
3. Harbor



Iron

1. Nickel
2. Bright White
3. Iron



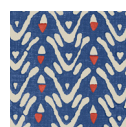
Ochre

1. Cloud
2. Bright White
3. Ochre



Pebble

1. Pebble
2. Harbor
3. Chalk



Sapphire

1. Sapphire
2. Red
3. Oat



Stratus

1. Stratus
2. Wasabi
3. Paper White