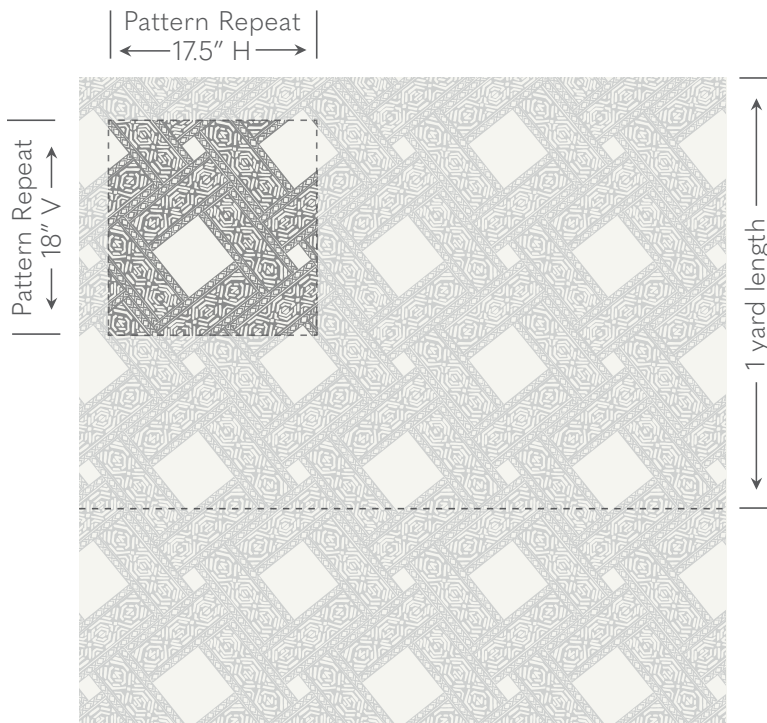


Galbraith & Paul

Specification Sheet

HANDBLOCK
Parquet



Shown above in Denim Room Design by Diane Murphy

Ground Cloth Logan Linen

Content 100% Linen

Printed Width 54"

Repeat 18"v x 17.5"h

Print Lengths Our tables are 8 yards long.
For orders over 8 yards, print lengths of 8 yards or less must be provided in yard or 1/2 yard increments.

Weight 6.8 oz / Yard²

Abrasion Wyzenbeek 21,000

Lightfastness AATCC 16 - Grade 5

Flame Resistance Not inherently FR; additional finish required.

Stain Finish Compatible with traditional spray finish only.

Cleaning Dry Clean Only. Use a trusted high-quality cleaner.

Applications Window treatments, upholstery, and bedding.

Backing Backing is recommended for heavy-use upholstery applications.
Requirements vary by upholsterer and end use.

Galbraith & Paul

Pattern Schematic

HANDBLOCK

Parquet

Printed Width: 54"

Repeat: 18"v x 17.5"h

GROUNDS:

- Bartram Natural Linen (BNL)
- Bartram White Linen (BWL)
- Logan Cream Linen (LCL)
- Logan Natural Linen (LNL)
- Logan White Linen (LWL)



Shown above in Light Cadet on Logan Natural Linen



Blossom (LCL)

- 1. Blossom
- 2. Red



Denim (LWL)

- 1. Denim
- 2. Midnight



Gold (LNL)

- 1. Gold
- 2. Jade



Light Cadet (LNL)

- 1. Light Cadet
- 2. Black



Light Mineral (LCL)

- 1. Light Mineral
- 2. Robin's Egg



Sangria (LNL)

- 1. Sangria
- 2. Raspberry



Sea (LWL)

- 1. Sea
- 2. Kelly



Sprout (LCL)

- 1. Sprout
- 2. Willow