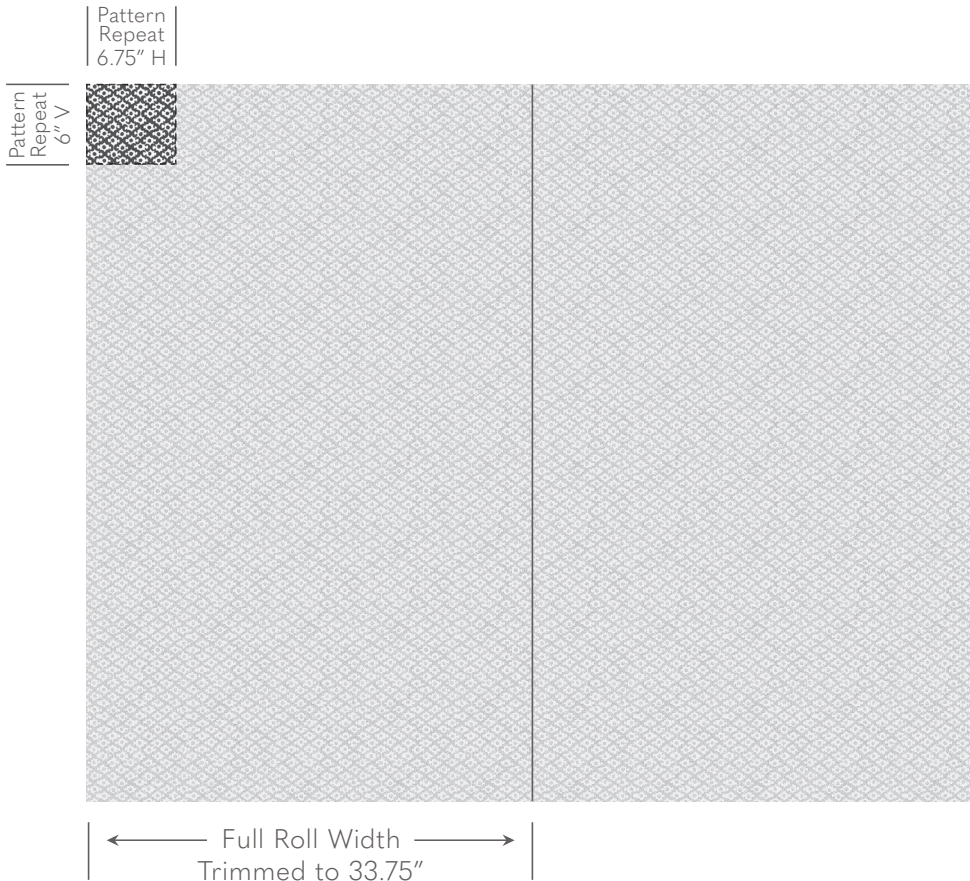


Galbraith & Paul

Specification Sheet

WALLPAPER
Lattice



Shown above in Light Mineral Room Design by Nicola Harding & Co.

- Contents** Paper, Nylon-Reinforced
- Thickness** 11 mil
- Printed Width** 35" - Requires Trimming
- Repeat** 6"v x 6.75"h
- Roll Lengths** Standard Roll Size is 10 yards. Custom Yardage amounts and roll lengths can also be specified. Custom Yardage amounts must be submitted with their roll lengths in order to be processed and confirmed. *All rolls start at the same place in the repeat.*
- Trim Marks** Standard, but can be omitted on request.
- Fire-Rating** ASTM E84 - Class A
- Moisture Resistance** For use in bathrooms and kitchens, we recommend [Proseal Plus](#) prior to installation, or [Benwood Stays Clear](#) post-installation.
- Lightfastness** AATCC 16 - Grade 5
- Cleaning** Wipe Gently, No Abrasives.

Galbraith & Paul recommends using a guild-certified wallcovering installer. Installation Instructions can be found on our website and are included with every order.

Galbraith & Paul

Pattern Schematic

WALLPAPER

Lattice

Width: 36" (trims to 33.75")

Repeat: 6"v x 6.75"h

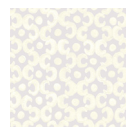


Shown above in Cloud



Baby Blue/Kiwi

1. Baby Blue
2. Kiwi
3. Chalk



Birch

1. Chalk
2. Chalk
3. Birch



Black

1. Black
2. Black
3. Oat



Black/Light Clay

1. Black
2. Light Clay
3. Oat



Cantaloupe

1. Cantaloupe
2. Cantaloupe
3. Vanilla



Cloud

1. Cloud
2. Cloud
3. Bright White



Fennel

1. Chalk
2. Chalk
3. Fennel



Latte/Robin's Egg

1. Latte
2. Robin's Egg
3. Ivory



Light Mineral

1. Light Mineral
2. Light Mineral
3. Ivory



Rhubarb/Fawn

1. Rhubarb
2. Fawn
3. Vanilla



Shadow

1. Chalk
2. Chalk
3. Shadow



Stone

1. Chalk
2. Chalk
3. Stone