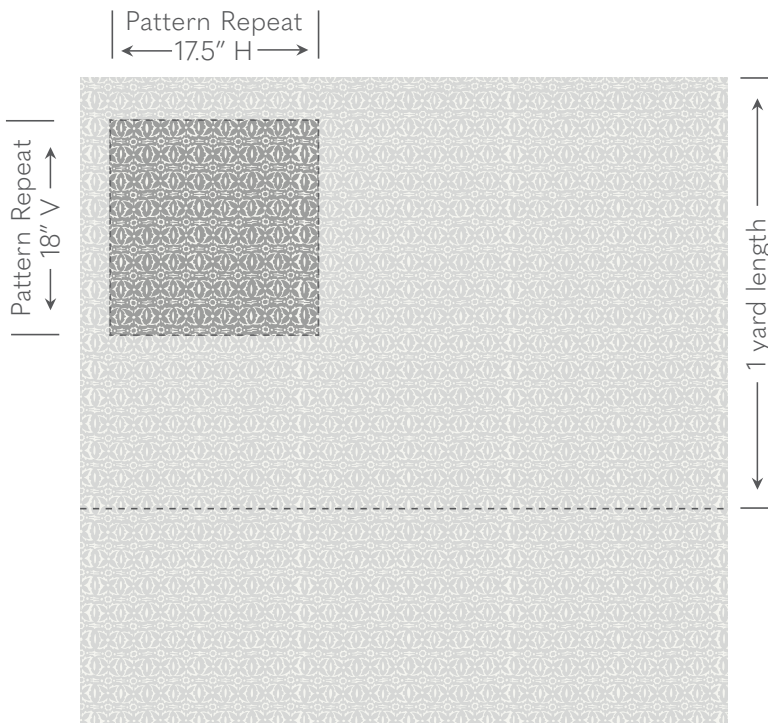


Galbraith & Paul

Specification Sheet

HANDBLOCK
Monarch



Shown above in Rhubarb

Ground Cloth Logan Linen

Content 100% Linen

Printed Width 54"

Repeat 18"v x 17.5"h

Print Lengths Our tables are 8 yards long.
For orders over 8 yards, print lengths of 8 yards or less must be provided in yard or 1/2 yard increments.

Weight 6.8 oz / Yard²

Abrasion Wyzenbeek 21,000

Lightfastness AATCC 16 - Grade 5

Flame Resistance Not inherently FR; additional finish required.

Stain Finish Compatible with traditional spray finish only.

Cleaning Dry Clean Only. Use a trusted high-quality cleaner.

Applications Window treatments, upholstery, and bedding.

Backing Backing is recommended for heavy-use upholstery applications.
Requirements vary by upholsterer and end use.

Galbraith & Paul

Pattern Schematic

HANDBLOCK

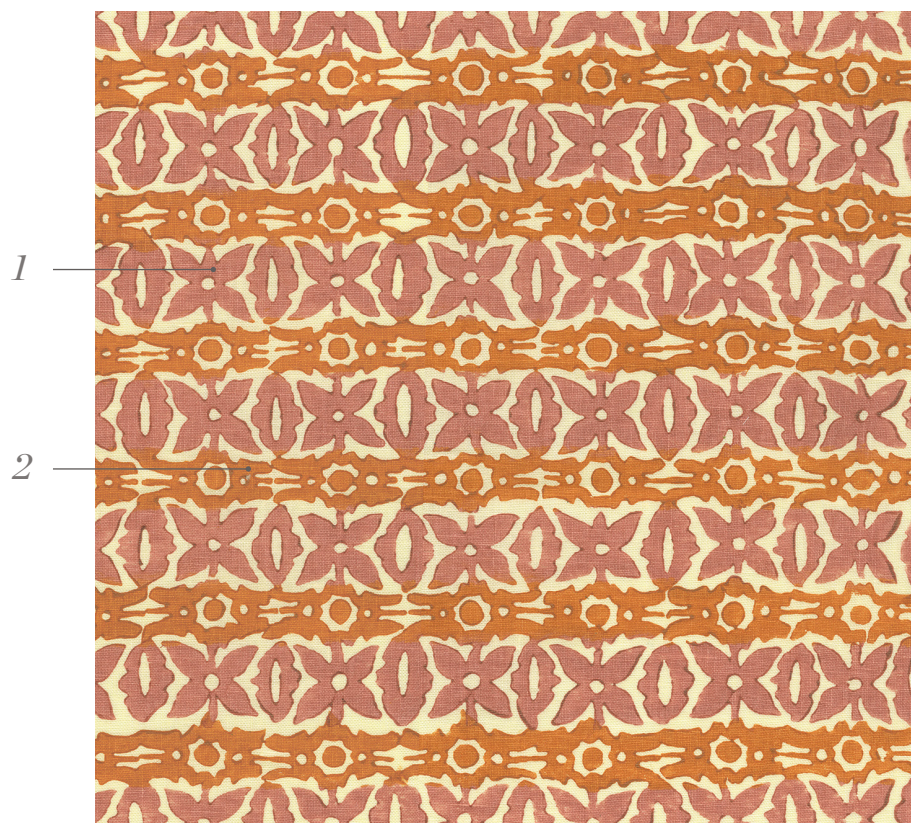
Monarch

Printed Width: 54"

Repeat: 18"v x 17.5"h

GROUNDS:

- Bartram Natural Linen (BNL)
- Bartram White Linen (BWL)
- Logan Cream Linen (LCL)
- Logan Natural Linen (LNL)
- Logan White Linen (LWL)



Shown above in Rhubarb on Logan Cream Linen



Cadet (LNL)

- 1. Cadet
- 2. Light Indigo



Denim (LWL)

- 1. Denim
- 2. Midnight



Light Flax (LCL)

- 1. Light Flax
- 2. Flax



Mineral (LCL)

- 1. Mineral
- 2. Robin's Egg



Rhubarb (LCL)

- 1. Rhubarb
- 2. Clementine



Sprout (LWL)

- 1. Sprout
- 2. Willow