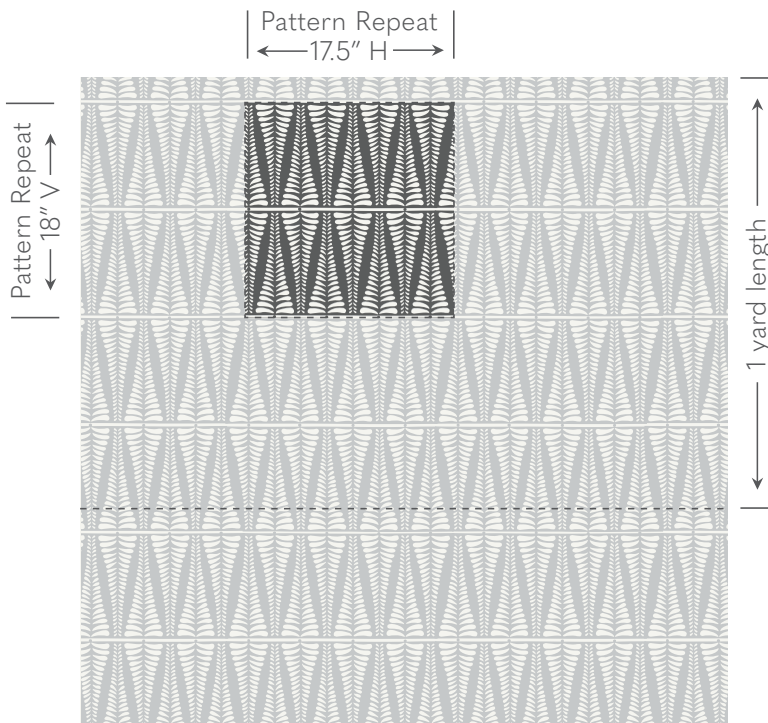


Galbraith & Paul

Specification Sheet

HANDBLOCK
Fern



Shown above in Wave Room Design by Andrew Maier

Ground Cloth Logan Linen

Content 100% Linen

Printed Width 54"

Repeat 18"v x 17.5"h

Print Lengths Our tables are 8 yards long.
For orders over 8 yards, print lengths of 8 yards or less must be provided in yard or 1/2 yard increments.

Weight 6.8 oz / Yard²

Abrasion Wyzenbeek 21,000

Lightfastness AATCC 16 - Grade 5

Flame Resistance Not inherently FR; additional finish required.

Stain Finish Compatible with traditional spray finish only.

Cleaning Dry Clean Only. Use a trusted high-quality cleaner.

Applications Window treatments, upholstery, and bedding.

Backing Backing is recommended for heavy-use upholstery applications.
Requirements vary by upholsterer and end use.

Galbraith & Paul

Pattern Schematic

HANDBLOCK

Fern



© Galbraith & Paul

Printed Width: 54"

Repeat: 18"v x 17.5"h

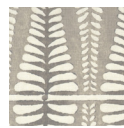
GROUND:

- Bartram Natural Linen (BNL)
- Bartram White Linen (BWL)
- Logan Cream Linen (LCL)
- Logan Natural Linen (LNL)
- Logan White Linen (LWL)

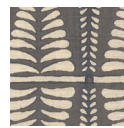
Shown above in Spring on Logan White Linen



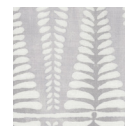
Alabaster (LWL)
1. Alabaster
2. Osprey



Ash (LCL)
1. Ash
2. Flint



Cadet (LNL)
1. Cadet
2. Carbon



Dove (LWL)
1. Dove
2. Dove Grey



Fennel (LWL)
1. Light Fennel
2. Fennel



Glacier (LWL)
1. Glacier
2. Sail



Pumice (LWL)
1. Pumice
2. Light Oat



Sage (LNL)
1. Sage
2. Olive



Slate (LCL)
1. Spray
2. Slate



Spring (LWL)
1. Spring
2. Sorrel



Toast (LWL)
1. Toast
2. Toffee



Wave (LNL)
1. Wave
2. Dark Wave