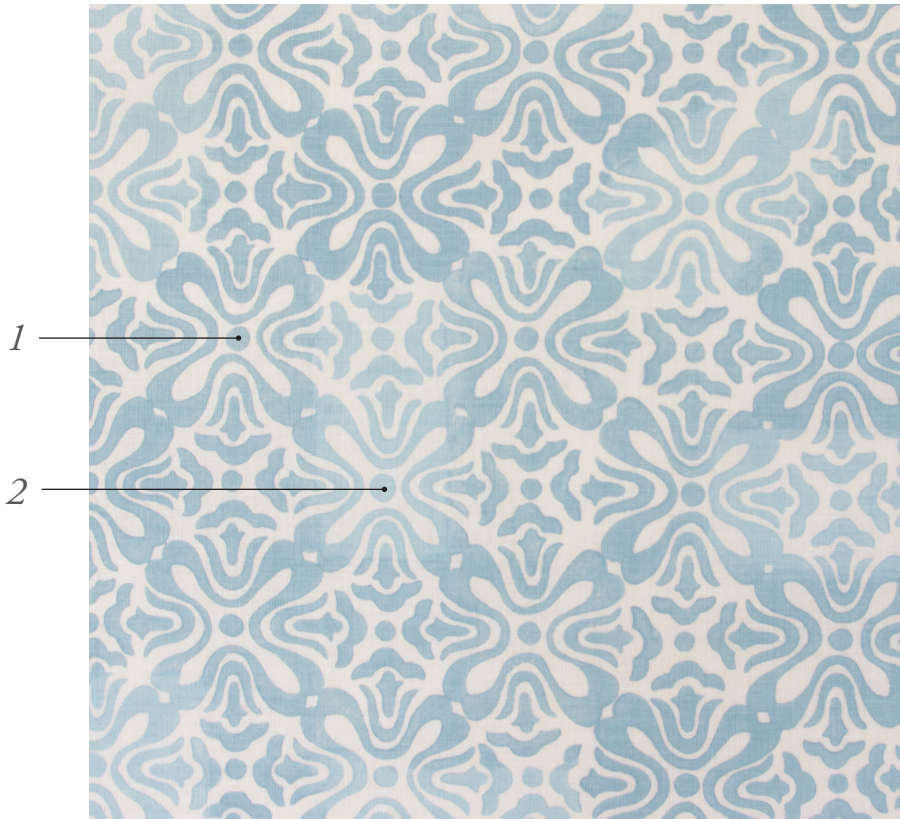


Standard Tulip Fabric Colorways



Pictured in Capri on Logan White Linen

Tulip

Width: 54"

Repeat: 18"v x 17 1/2"h

Grounds:

- Bartram Natural Linen (BNL)
- Bartram White Linen (BWL)
- Logan Cream Linen (LCL)
- Logan Natural Linen (LNL)
- Logan White Linen (LWL)
- Pewter Velvet (PV)

Capri (LWL)

1. Capri
2. Topaz

Dark Wave (LNL)

1. Dark Wave
2. Bluestone

Light Vapor (LWL)

1. Light Vapor
2. Light Dusk

Pollen (LNL)

1. Pollen
2. Goldenrod

Caramel (LNL)

1. Caramel
2. Toffee

Denim (LWL)

1. Denim
2. Denim Roll-In for Tulip

Mineral (LWL)

1. Mineral
2. Light Mineral

Terra Cotta (LNL)

1. Terra Cotta
2. Radish

Chiffon (LWL)

1. Chiffon
2. Rosewater

Light Cadet (LWL)

1. Light Cadet
2. Light Stone